

NEW FOR  
2019

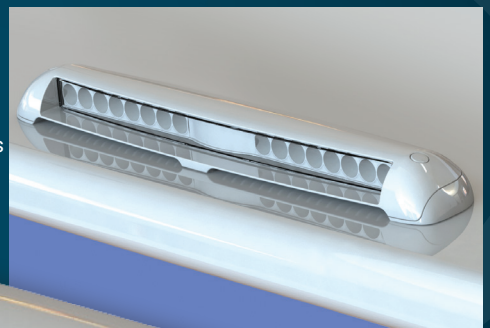
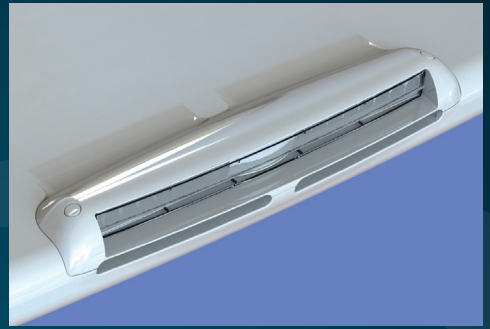


# RAZOR LIGHT BAR

## Razor Light Bar - Sleek. Streamlined. Powerful.

Introducing Razor - The World's FIRST flush-mount light bar. Razor was carefully designed to be easily integrated into most existing hardtop, arch, and pilothouse designs – typically with little or no modification to production tooling.

Razor is designed to drop into a contoured pocket molded into a hardtop, radar arch, brow, or other surface. Alternatively, use Razor's surface mount kit for a sleek, low profile installation on existing flat or slightly crowned tops. Mount forward or aft, horizontal or downward facing. In all installations Lumitec's careful thermal analysis and self-venting design puts an end to 'pod' mounted lightbars, which can overheat and damage surrounding composites in hard tops. Flood and spot/flood beam patterns ensure the light goes where you need it.



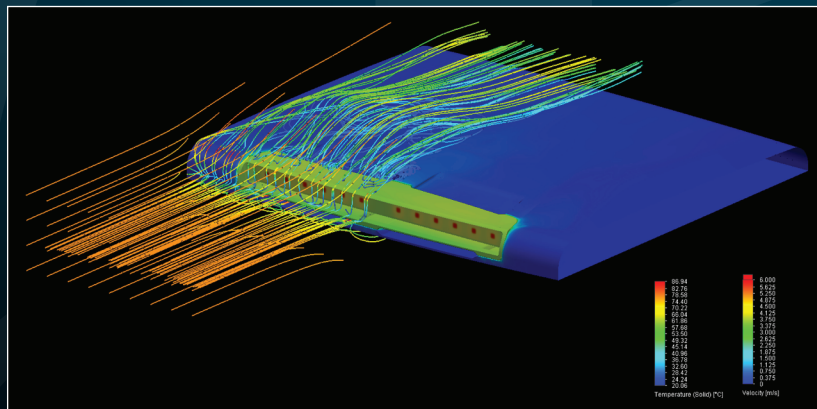
Available with spot and spot/flood beam patterns



### Razor LED Light Bar

Output:	White
Lumens:	10,000+
Voltage:	10-30vDC
12vDC Amps:	9A
24vDC Amps:	4.2A
CCT:	5000K
CRI:	70+

**10,000** Lumens



## Advanced Thermal Management

Razor has been designed and analyzed as a complete system – with careful consideration of the top in which it is mounted. This means that Razor delivers maximum performance while protecting hardtops and pods from dangerously high temperatures.

**RAZOR**  
LUMITEC

NEW FOR  
2019



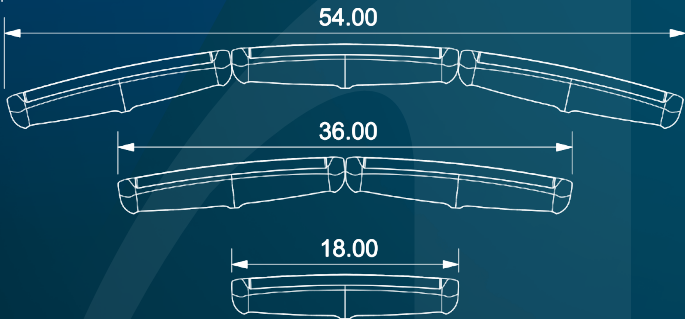
# RAZOR LIGHT BAR

## 80% LOWER PROFILE

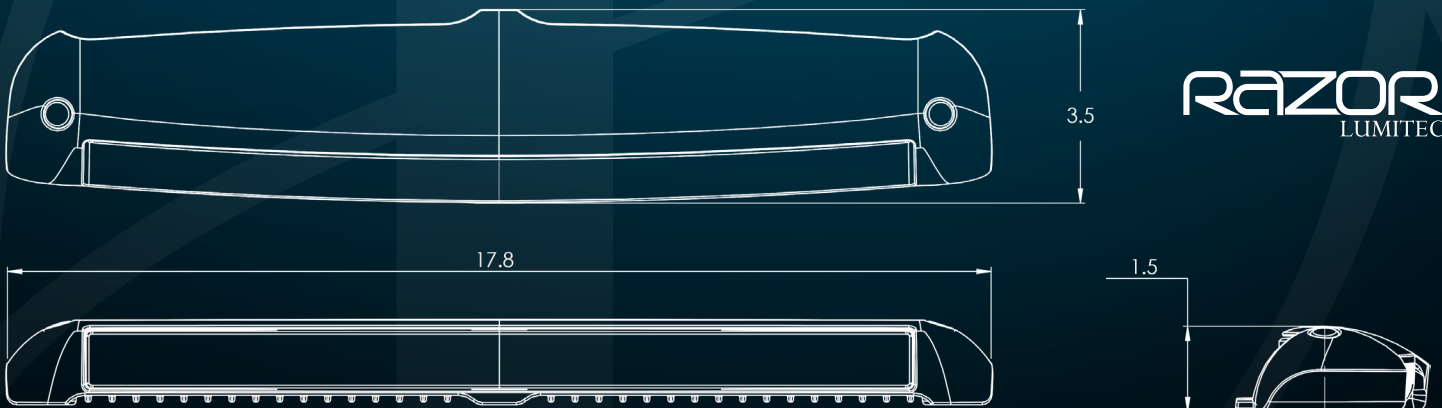
Than most other light bars on the market

Razor's integrated design delivers more power with a cleaner, more streamlined look. Up to 80% more streamlined in fact. As the images to the right demonstrate Razor allows builders to eliminate light pods which must be molded and added separately, saving many hours of costly finishing labor. Razor simply drops into an as-molded recess. CAD models of mold plugs or tooling inserts may be provided upon request.

### Configurations:



### Dimensions:



**Side Profile**

Competitor Products

Lumitec Razor

Competitor Pod Design

Lumitec Razor

80% Lower Profile with Superior Thermal Management