

MotorGuide®

 **Pinpoint**^{GPS}

Pinpoint® Gateway Setup Instructions

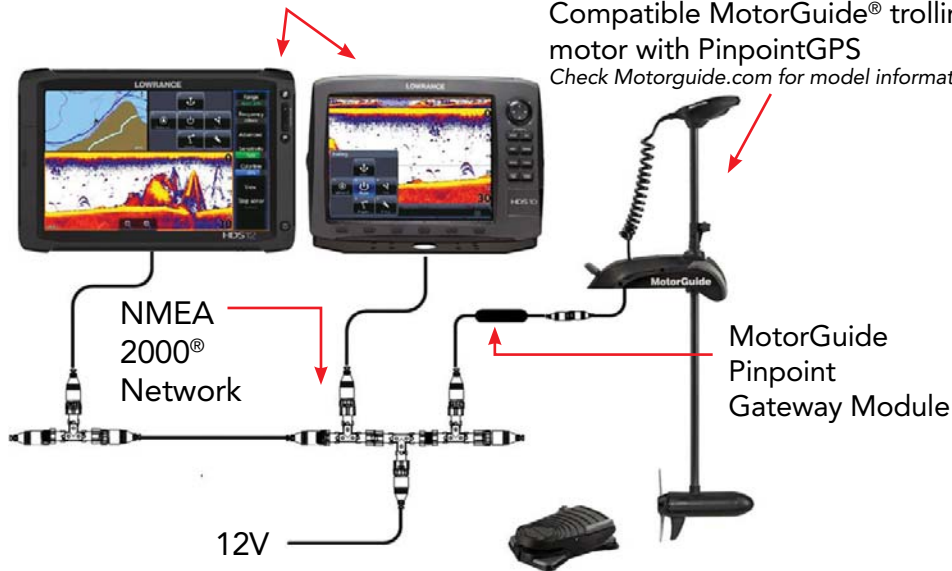
Connecting the Pinpoint® Gateway

Compatible Lowrance® fishfinder / chartplotter

Check Lowrance.com for model information

Compatible MotorGuide® trolling motor with PinpointGPS

Check Motorguide.com for model information



*Note: A NMEA 2000 Network is required for connectivity.
If your vessel does not have this network, a NMEA starter kit is required.
(MotorGuide #8M0092086 or equivalent.)*

Xi5 Motor Upgrade Process

It may be necessary for customers with a MotorGuide® Xi5 trolling motor to update the motor software before it is compatible with the Lowrance® SmartSteer interface.

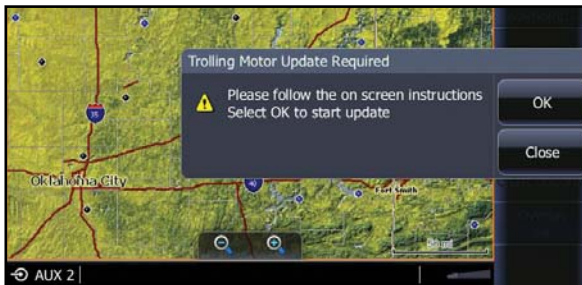
To update the motor, follow the directions below and those shown on the HDS display.

1. Update HDS unit(s) to the 3.5 software version. *Note: Your motor will not update unless all HDS unit(s) have the 3.5 software, see Lowrance.com for details.*
2. Once updated, power off HDS unit(s) and the NMEA 2000® network.
3. Connect the Pinpoint® Gateway Kit to your Xi5 trolling motor and the NMEA 2000 network.
4. Power on the Xi5 Trolling Motor.
 - *Make sure the motor is in the down position (deployed)*
 - *Make sure the motor has an active GPS lock (Blue GPS light illuminated on the motor)*
5. Power on the NMEA 2000 network.
6. Power on at least one networked HDS unit.

Xi5 Motor Upgrade Process ON-SCREEN

The HDS will prompt you that a trolling motor update is required.

IMPORTANT: Interruptions during the update process may damage your motor. Do not attempt to stop the update once started.



1. Press OK to start the update.

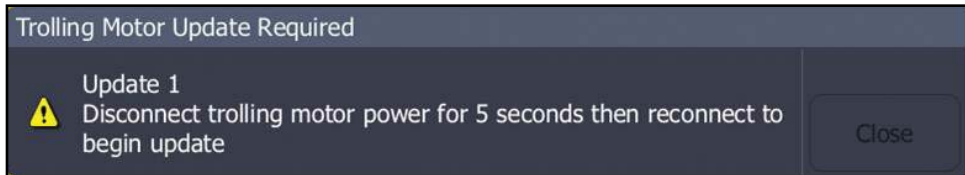
Note: You will not have Xi5 Motor control until after the motor is updated.

- If you press Close, it will delay the motor update until the next time you power on your HDS unit(s).

Xi5 Motor Upgrade Process ON-SCREEN

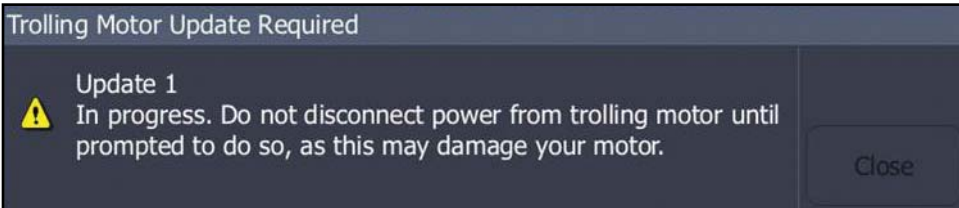
2. You will be prompted to disconnect the power from the trolling motor for 5 seconds then reapply power. This will initiate the motor update.

IMPORTANT: Only remove power from the trolling motor and not from the HDS unit performing the update or the NMEA 2000® network. The power cycle (on/off) of the trolling motor is what starts the update. The HDS and the NMEA 2000 network need to remain powered on to begin loading the software when the motor powers on.



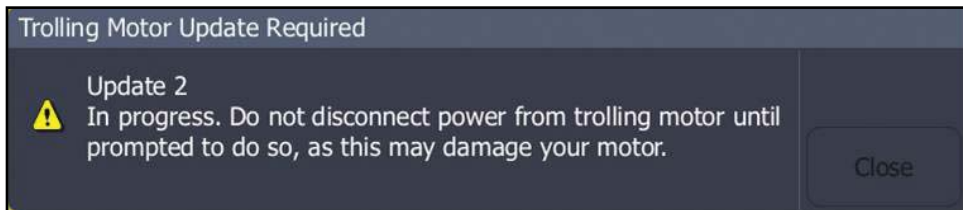
Xi5 Motor Upgrade Process ON-SCREEN

3. Once the motor has been disconnected then reconnected to power, the update will run. You will be prompted with "Update 1 In Progress," indicating the first software package is loading to the motor.
 - Please follow the on-screen prompts and **only** disconnect power from the trolling motor when prompted to do so.
 - Do not power off the HDS unit or the NMEA 2000® network during the update process.



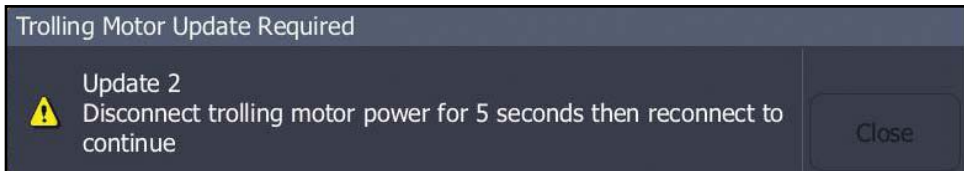
Xi5 Motor Upgrade Process ON-SCREEN

4. Once Update 1 is complete, you will be prompted with "Update 2 In Progress," indicating the second software package is loading to the motor.
 - Please follow the on-screen prompts and **only** disconnect power from the trolling motor when prompted to do so.
 - Do not power off the HDS unit or the NMEA 2000® network during the update process.

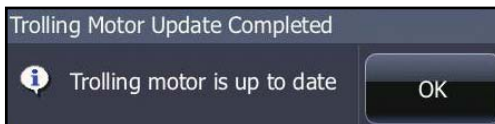


Xi5 Motor Upgrade Process ON-SCREEN

- Once Update 2 is complete, you will be prompted to disconnect the power from the trolling motor for 5 seconds then reapply power.
 - Please follow the on-screen prompts and **only** disconnect power from the trolling motor when prompted to do so.
 - Do not power off the HDS unit or the NMEA 2000® network during the update process.

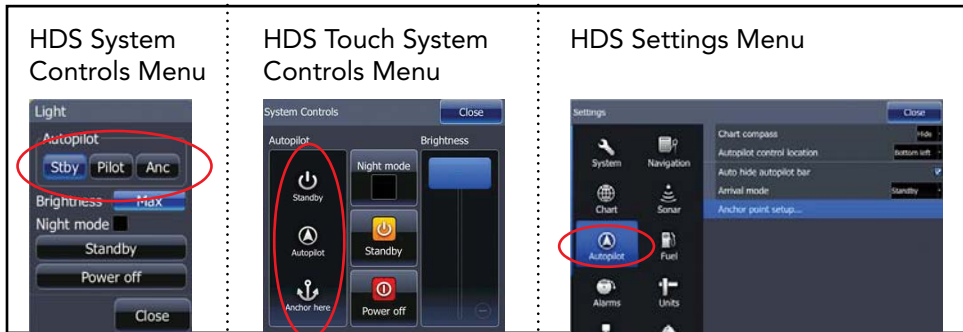


- After the power off/on cycle is complete, you will be prompted with "Trolling Motor Update is completed." Press OK to continue installation.



Xi5 Motor Upgrade Process ON-SCREEN

- Once the motor is updated, it is necessary to **power off** the HDS, the NMEA 2000® network, and the Xi5 trolling motor.
- Power on all components. You should now see the trolling motor controls (Autopilot) in System Controls (Power Key) and the Settings menu.



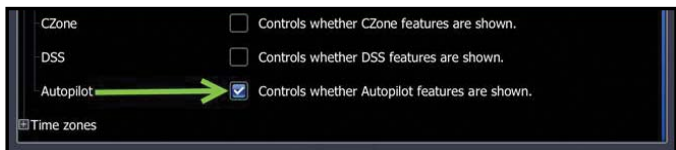
IMPORTANT: You will not have control of the Xi5 motor from the HDS until the motor is deployed and the motor has a GPS lock.

Troubleshooting

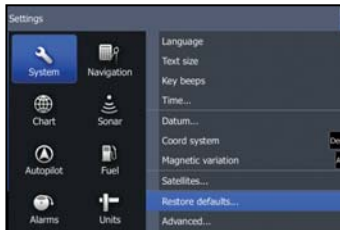
ON-SCREEN

If the trolling motor controls are not visible in the System Controls menu, try one of the following:

- A)** Manually enable the Autopilot features:
- Select System > Advanced > Features
 - Ensure Autopilot box is checked



- B)** Restore Defaults
- Select System > Restore Defaults



Troubleshooting

MotorGuide®

For questions or concerns about your MotorGuide® trolling motor, Pinpoint® GPS, or Pinpoint Gateway:

Phone:

MotorGuide Consumer Affairs
United States: 920-929-5040

Online:

www.mercurymarine.com/en/us/contact/outboard-customer-assistance

LOWRANCE®

For questions or concerns about the Lowrance® fishfinder / chartplotter:

Phone:

Lowrance Customer Service
United States: 800-628-4487

Online:

www.lowrance.com/en-us/Contact-Us



Keep your trolling motor up to date.

**For future software updates visit:
www.motorguide.com/support/software_updates**