



MG3000 Digital Instruments

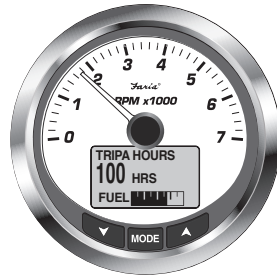
ISO321
Rev. Decn 9055 11/2013

Quick Reference Card

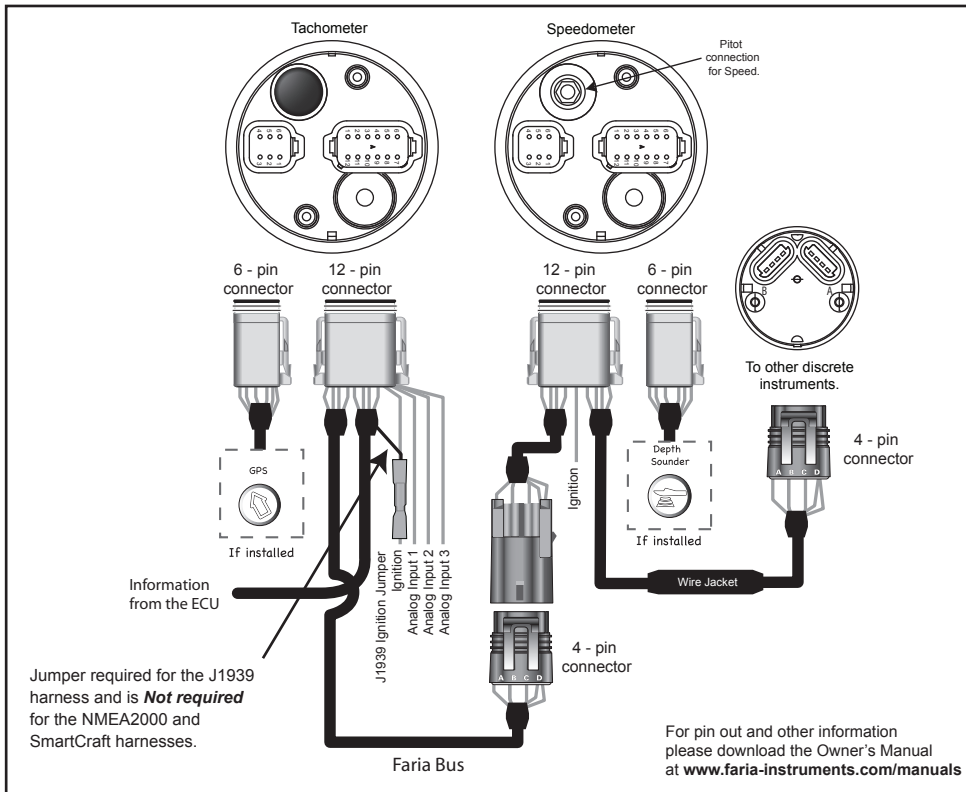
Your MG3000 Instrument Package comes equipped with factory recommended settings and displays. Basic Initialization is necessary for the system to perform properly, please reference the Owner's Manual for additional information. You can download the Owner's Manual at;

www.faria-instruments.com/manuals

Note: Some functions may not be present in your version of the MG3000 program. Engine and Boat manufacturers have the ability to customize the program to fit their build requirements. If you are looking for a feature listed in the Appendix and your MG does not show the function required please consult your Engine and Boat manufacturer's User manual.



Wiring



Silence Alarms

To silence an alarm, press the **MODE** button on the tachometer. For additional information and a possible solution, reference your User's manual. If multiple alarms are present the display will automatically scroll through the current alarm(s) messages. Alarm messages will be stored internally for later troubleshooting if required. All current alarms will be shown while in Normal Mode by scrolling.

Made in the USA

Faria Marine Instruments
www.faria-instruments.com

Scrolling - Normal Operating Mode

▼ ▲	The "Up" or "Down" buttons will scroll through active displays.
-----	---

Making a Selection

MODE	Press the "MODE" button for longer than one second to make a selection.
-------------	---

Exiting a Menu

MODE	A short press of the "MODE" button for less than 1 second will exit from a menu. 15 seconds of inactivity will exit.
-------------	--

Changing the Current Mode

MODE	From the "Normal" mode press the "MODE" once to view the menus.
▼ ▲	The "Up" or "Down" button will scroll through the available options.
MODE	Press the "MODE" button for longer than one second to make a selection.

Brightness Adjustment (TACH only)

MODE	From the "Normal" mode press the "MODE" button once.
▼ ▲	Scroll until "LIGHTING" is selected.
MODE	Press the "MODE" button for longer than one second to make a selection. Select "ADJUST DIAL" to adjust all instruments' lighting levels. OR Select "ADJUST LCD" to adjust the Tachometer and Speedometer's display brightness.
▼ ▲	Press the "Up" or "Down" button to increase or decrease lighting level.
MODE	Press the "MODE" button for longer than one second to make a selection.

Contrast Adjustment (TACH only)

MODE	Press the "MODE" button once.
▼ ▲	Scroll until "CONTRAST" is selected
MODE	Press the "MODE" button for longer than one second to make a selection.
▼ ▲	Press the "Up" or "Down" button to increase or decrease the contrast in the Tachometer and Speedometer's display.
MODE	Press the "MODE" button for longer than one second to make a selection.

Trip Data View/Reset (TACH only)

▼ ▲	From the "Normal" mode hold the "Up" and "Down" buttons for 1 second
▼ ▲	Scroll to "TRIP A", "TRIP B" or "SEASON"
MODE	Press the "MODE" button for longer than one second to make a selection.
▼ ▲	Scroll to "VIEW" or "RESET DATA"
MODE	Press the "MODE" button for longer than one second to make a selection.

Fuel Management (TACH only)

MODE	From the "Normal" mode press the "MODE" button once.
▼ ▲	Scroll until "FUEL LEVEL" is selected.
MODE	Press the "MODE" button for longer than one second to make a selection.
▼ ▲	Scroll to the desired tank.
MODE	Press the "MODE" button for longer than one second to select a tank.
▼ ▲	Scroll to desired fuel function.

*It is recommended to adjust the fuel level(s) after every refueling to achieve the highest level of accuracy for fuel management calculations.

Notes:

1. **Poor battery condition could result in gauges performing self test unexpectedly.**
2. Some discoloration of the display may occur if the gauge is left in direct sunlight for a prolonged period. Adjusting the contrast will improve visibility.
3. Certain polarized sunglasses will cause the display to become illegible.
4. Use only soap and water when cleaning your MG3000 instruments. Certain chemical cleaners will damage the fog-resistant lens on your instruments.

Download the full Owner's manual at www.faria-instruments.com/manuals



MG3000 Digital Instruments

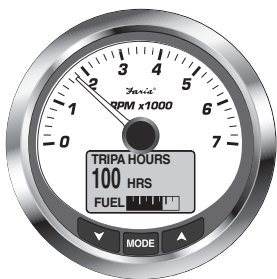
ISO321
Rev. Dec 9 2015 11/2013

Quick Reference Card

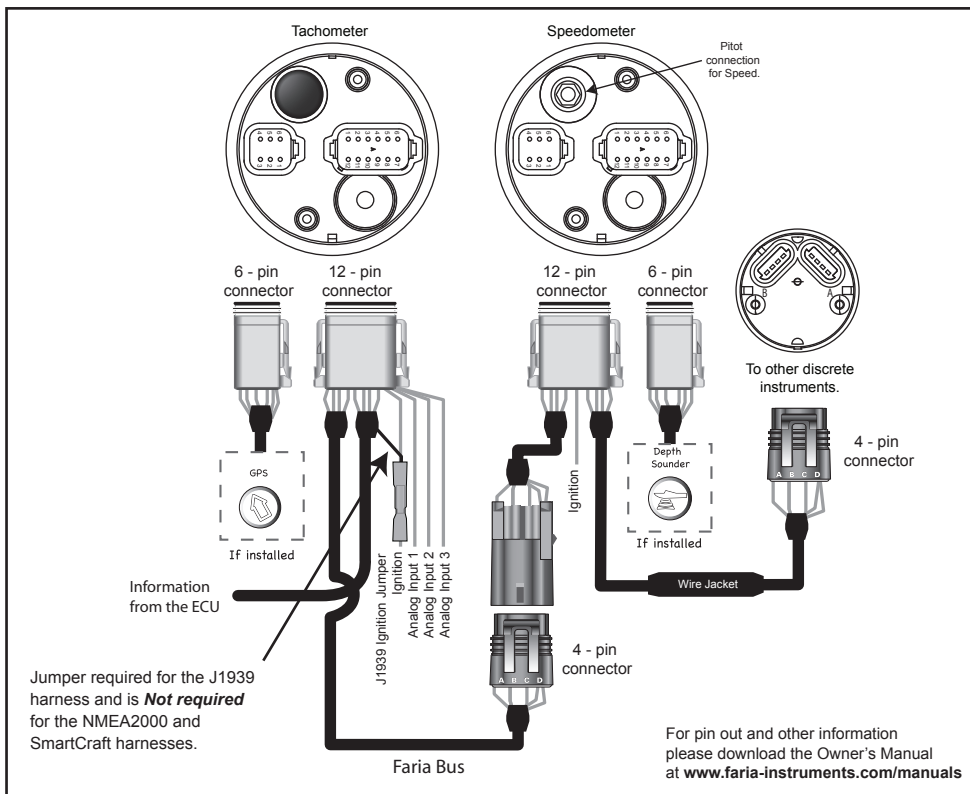
Your MG3000 Instrument Package comes equipped with factory recommended settings and displays. Basic Initialization is necessary for the system to perform properly, please reference the Owner's Manual for additional information. You can download the Owner's Manual at;

www.faria-instruments.com/manuals

Note: Some functions may not be present in your version of the MG3000 program. Engine and Boat manufacturers have the ability to customize the program to fit their build requirements. If you are looking for a feature listed in the Appendix and your MG does not show the function required please consult your Engine and Boat manufacturer's User manual.



Wiring



Silence Alarms

To silence an alarm, press the **MODE** button on the tachometer. For additional information and a possible solution, reference your User's manual. If multiple alarms are present the display will automatically scroll through the current alarm(s) messages. Alarm messages will be stored internally for later troubleshooting if required. All current alarms will be shown while in Normal Mode by scrolling.

Made in the USA

Faria Marine Instruments
www.faria-instruments.com

Scrolling - Normal Operating Mode

▼ ▲	The "Up" or "Down" buttons will scroll through active displays.
-----	---

Making a Selection

MODE	Press the "MODE" button for longer than one second to make a selection.
-------------	---

Exiting a Menu

MODE	A short press of the "MODE" button for less than 1 second will exit from a menu. 15 seconds of inactivity will exit.
-------------	--

Changing the Current Mode

MODE	From the "Normal" mode press the "MODE" once to view the menus.
▼ ▲	The "Up" or "Down" button will scroll through the available options.
MODE	Press the "MODE" button for longer than one second to make a selection.

Brightness Adjustment (TACH only)

MODE	From the "Normal" mode press the "MODE" button once.
▼ ▲	Scroll until "LIGHTING" is selected.
MODE	Press the "MODE" button for longer than one second to make a selection. Select "ADJUST DIAL" to adjust all instruments' lighting levels. OR Select "ADJUST LCD" to adjust the Tachometer and Speedometer's display brightness.
▼ ▲	Press the "Up" or "Down" button to increase or decrease lighting level.
MODE	Press the "MODE" button for longer than one second to make a selection.

Contrast Adjustment (TACH only)

MODE	Press the "MODE" button once.
▼ ▲	Scroll until "CONTRAST" is selected
MODE	Press the "MODE" button for longer than one second to make a selection.
▼ ▲	Press the "Up" or "Down" button to increase or decrease the contrast in the Tachometer and Speedometer's display.
MODE	Press the "MODE" button for longer than one second to make a selection.

Trip Data View/Reset (TACH only)

▼ ▲	From the "Normal" mode hold the "Up" and "Down" buttons for 1 second
▼ ▲	Scroll to "TRIP A", "TRIP B" or "SEASON"
MODE	Press the "MODE" button for longer than one second to make a selection.
▼ ▲	Scroll to "VIEW" or "RESET DATA"
MODE	Press the "MODE" button for longer than one second to make a selection.

Fuel Management (TACH only)

MODE	From the "Normal" mode press the "MODE" button once.
▼ ▲	Scroll until "FUEL LEVEL" is selected.
MODE	Press the "MODE" button for longer than one second to make a selection.
▼ ▲	Scroll to the desired tank.
MODE	Press the "MODE" button for longer than one second to select a tank.
▼ ▲	Scroll to desired fuel function.

*It is recommended to adjust the fuel level(s) after every refueling to achieve the highest level of accuracy for fuel management calculations.

Notes:

1. **Poor battery condition could result in gauges performing self test unexpectedly.**
2. Some discoloration of the display may occur if the gauge is left in direct sunlight for a prolonged period. Adjusting the contrast will improve visibility.
3. Certain polarized sunglasses will cause the display to become illegible.
4. Use only soap and water when cleaning your MG3000 instruments. Certain chemical cleaners will damage the fog-resistant lens on your instruments.

Download the full Owner's manual at www.faria-instruments.com/manuals