

Finding a Marine Service and Navigating to It

To find and navigate to a marine service from your current location:

1. From the Home screen, touch **Where To? > Offshore Services**.
2. Touch the marine service category to which you want to navigate. The chartplotter shows the list of the 50 nearest locations and the distance and bearing to each.
3. Touch the marine service item to which you want to navigate. A screen containing information about the selected marine service appears.
4. Touch **Navigate To > Go To** to navigate directly to the location. (Or, touch **Route To** to create a specific route to the location.)
5. Follow the colored line on the screen to the destination.



List of Marine Service Items



Go to Destination



Navigation Chart

Marking a Waypoint

To mark your current location as a waypoint:

1. From any screen, touch **Mark**.
2. Touch **Edit** to designate a specific name, symbol, water depth, water temperature, or add a comment.

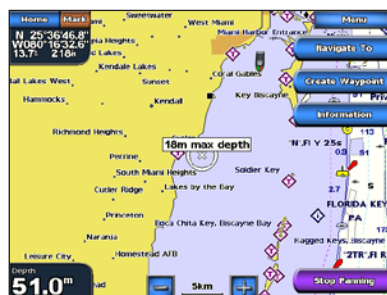
To create a new waypoint:

1. From the Home screen, touch **Charts > Navigation Chart**.
2. Touch the location you want to save as a waypoint.
3. Touch **Create Waypoint**.

Navigating to a Destination on the Chart

To navigate to a destination on the chart:

1. From the Home screen, touch **Charts > Navigation Chart**.
2. Touch the point on the chart to which you want to navigate. A pointer (M) marks the point.
3. Touch **Navigate To**.
4. Touch **Go To** to navigate directly to the location.
5. Follow the line on the Navigation Chart to the destination.



Navigation Chart



Go to Destination

Editing or Deleting a Waypoint

To edit a waypoint:

1. From the Home screen, touch **Charts > Navigation Chart**.
2. Touch the waypoint on the Navigation chart.
3. Touch the button for the waypoint you want to edit.
4. Touch **Edit**.
5. Touch the waypoint attribute you want to change (**Name, Symbol, Depth, Water Temp, or Comment**).

To delete a waypoint:

1. From the Home screen, touch **Information > User Data > Waypoints**.
2. Touch the waypoint you want to delete.
3. Touch **Review > Delete**.

GPSMAP® 5000 Series

quick reference guide



Turning the Unit On and Off

To turn on the chartplotter:

1. Press and release the **Power** key.
2. When the warning screen appears, touch **I Agree**.

To turn off the chartplotter:

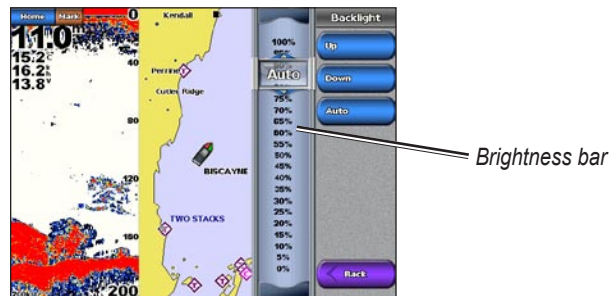
1. Press and hold the **Power** key.
2. If one chartplotter is connected, the chartplotter shuts down. If multiple chartplotters are connected, a prompt asks if you want to turn off the entire system. Touch **Yes** to turn off the entire network, or touch **No** to put the chartplotter in sleep mode.

See the *Important Safety and Product Information* guide in the product box for product warnings and other important information.

Adjusting the Backlight and Color Mode

To adjust the backlight level:

1. While the chartplotter is on, press and quickly release the **Power** key.
2. Touch **Backlight**.
3. Select an option to adjust the backlight:
 - To allow the chartplotter to automatically adjust the backlight based on ambient light, touch **Auto**.
 - To manually adjust the backlight, touch and hold **Up** or **Down**, or touch and drag the brightness bar.



To adjust the color mode:


1. Press and release the **Power** key.
2. Touch **Color Mode**.
3. Touch **Day Colors**, **Night Colors**, or **Auto**.

Using the Man OverBoard Feature

To mark and navigate to a Man Overboard (MOB) location:

1. From the Home screen, touch **Man Overboard**.
2. Touch **Yes** to begin navigating to the MOB location.

To delete an MOB location:

1. From the Home screen, touch **Information** > **User Data** > **Waypoints**.
2. Touch the MOB location you want to delete. MOB locations are marked with the  symbol.
3. Touch **Review** > **Delete**.

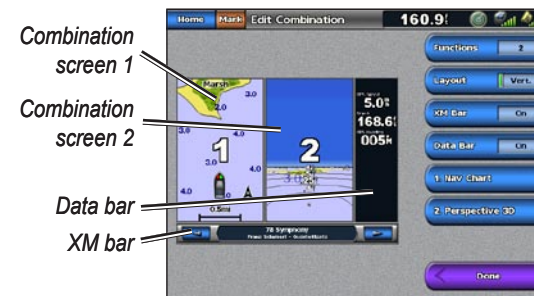


Man Overboard

Using Combination Screens


To access and change screen combinations:

1. Complete one of the following actions to access the Edit Combinations screen:
 - While viewing a combinations screen, touch **Menu** > **Change Combination**.
 - From the Home screen, touch **Combinations** > **Unused Combo** (if one is available).
2. Select an option to customize the Combinations screen. If you have a BlueChart® g2 Vision® SD card or are connected to network devices such as sonar and radar, more combination screen options will be available.
 - Touch **Functions** to select the number of combination screens.
 - Touch **Layout** to change to vertical or horizontal layout.
 - Touch **XM Bar** to toggle the XM® bar on or off.
 - Touch **Data Bar** to toggle the data bar on or off.
 - Touch a numbered option, such as **1. Nav Chart** or **2. Perspective 3D** in the example, to select the combination screen to view.




Creating and Editing Routes

To create a route from your present location:

1. From the Home screen, touch **Charts** > **Navigation Chart**.
2. Touch your destination on the Navigation chart. Touch and drag the Navigation screen to pan the map. The destination is indicated by .
3. Touch **Navigate To** > **Route To**.
4. Touch the location at which you want to make the last turn toward your destination.
5. Touch **Add Turn**.
6. To add additional turns, continue to touch the location at which you want to make a turn (working backward from the destination), and then touch **Add Turn**.
7. Touch **Done** to finish the route, or touch **Cancel Route** to delete the route.



To create a route in another location:

1. From the Home screen, touch **Information** > **User Data** > **Routes** > **New Route** > **Use Chart**.
2. Touch the route starting point. The starting point is indicated by .
3. Touch **Add Turn**.
4. Touch the location of the first turn.
5. Touch **Add Turn**. Repeat until the route is complete.



To edit a route:

1. From the Home screen, touch **Information** > **User Data** > **Routes**.
2. Touch the route to edit.
3. Touch **Review** > **Edit Route**. You can edit the route name or turns, or delete the route.

Go to www.garmin.com for additional documentation and information.

Garmin®, the Garmin logo, GPSMAP®, BlueChart®, and g2 Vision® are trademarks of Garmin Ltd. or its subsidiaries, registered in the USA and other countries. These trademarks may not be used without the express permission of Garmin. XM® is a registered trademark of XM Satellite Radio Inc.