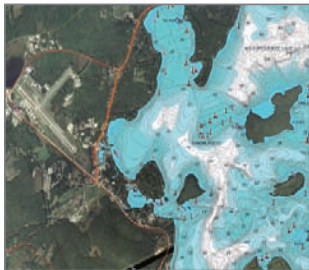




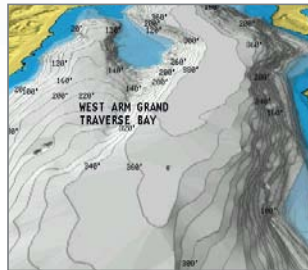
**Navionics Freshest Data** — When you buy Hotmaps Premium, Hotmaps Platinum, Fish'N Chip, Gold or Platinum+ products you are eligible for unlimited updates of the 2D Gold component for a period of one year — this means you always have access to our Freshest Data. For more information visit our webstore at [www.navionics.com](http://www.navionics.com).

**Navionics PC App** — Enjoy the same functionality and value of our award winning mobile apps on your PC Anytime, Anywhere. Free with the purchase of any HotMaps Premium, Hotmaps Platinum, Gold or Platinum+ chart. Download Navionics PC App from the web store at [www.navionics.com](http://www.navionics.com).

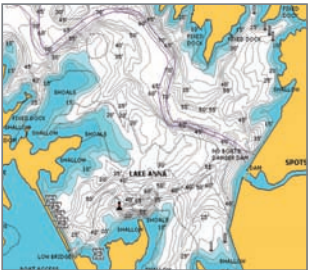
**Enjoy Navionics...  
Anytime, Anywhere.**



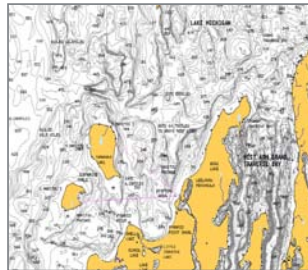
**HotMaps Platinum Satellite Photo Overlay** reveals shallow structure, creek channels, and shore reference points.



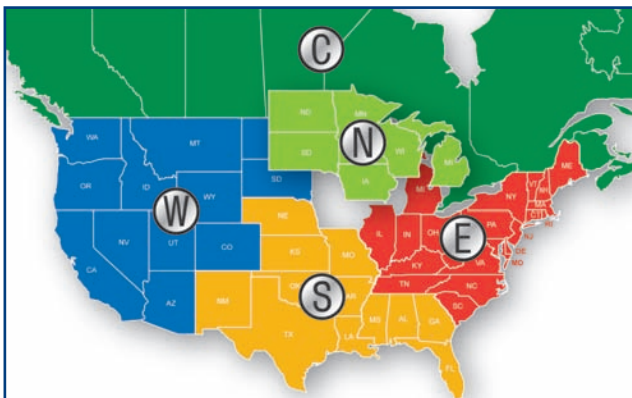
**HotMaps Platinum 3D with TurboView™** adjustable pitch, and 360° rotation simulates your real-life environment.



**HotMaps Premium** the standard in 2D High Definition Lake Maps.



**Fish'N Chip** Ideal for locating fish holding structure with high resolution detail.



## HotMaps<sup>Platinum</sup>

**HotMaps Platinum** — HotMaps Premium plus 3D View, high resolution top-down photo chart overlay and panoramic pictures.

DESCRIPTION	ITEM	NAV#	MSRP
North	#	MSD/HMPT-N6	199.00
South	#	MSD/HMPT-S6	199.00
East	#	MSD/HMPT-E6	199.00
West	#	MSD/HMPT-W6	199.00
Canada	#	MSD/HMPT-C6	199.00

## HotMaps<sup>PREMIUM</sup>

**HotMaps Premium** — the most detailed lake maps available with 1' contours on over 1,000 HD lakes plus 17,000 lake maps with general features.

DESCRIPTION	ITEM	NAV#	MSRP
North	#	MSD/PREM-N6	149.00
South	#	MSD/PREM-S6	149.00
East	#	MSD/PREM-E6	149.00
West	#	MSD/PREM-W6	149.00
Canada	#	MSD/PREM-C6	149.00

## HotMaps\*

**HotMaps\*** — 700 HD lakes plus 14,000 lakes with general features. A great value!

DESCRIPTION	ITEM	NAV#	MSRP
North	#	MSD/HM-N	99.00
South	#	MSD/HM-S	99.00
East	#	MSD/HM-E	99.00
West	#	MSD/HM-W	99.00
Canada	#	MSD/HM-C	99.00

\*Freshest Data update not available for HotMaps charts.

## Fish'N Chip

**Fish'N Chip HD Fishing Detail** — The most detailed fishing charts. High resolution one meter bathy for entire Great Lakes (US and Canada) and up to 1' HD bathy on select coastal estuaries and bays.

DESCRIPTION	ITEM	NAV#	MSRP
East	#	MSD/FISH-E	199.00
Great Lakes	#	MSD/FISH-G	199.00
West & Gulf	#	MSD/FISH-W	199.00



**Enjoy Navionics...  
Anytime, Anywhere.**

**Navionics Freshest Data** — When you buy Hotmaps Premium, Hotmaps Platinum, Fish'N Chip, Gold or Platinum+ products you are eligible for unlimited updates of the 2D Gold component for a period of one year — this means you always have access to our Freshest Data. For more information visit our webstore at [www.navionics.com](http://www.navionics.com).

**Navionics PC App** — Enjoy the same functionality and value of our award winning mobile apps on your PC Anytime, Anywhere. Free with the purchase of any HotMaps Premium, Hotmaps Platinum, Gold or Platinum+ chart. Download Navionics PC App from the web store at [www.navionics.com](http://www.navionics.com).

## Platinum+

**Platinum+ Multi-Dimensional Charts** — Navionics® Gold plus 3D with TurboView™, high resolution photo/chart overlay, port photos, geo-referenced coast pilots, and fishing detail.

### XL

DESCRIPTION	ITEM	NAV#	MSRP
<b>Lower 48 States &amp; Hawaii</b>			
Maine	#	MSD/673P+	199.00
Boston-New York	#	MSD/674P+	199.00
New Jersey-Delaware	#	MSD/637P+	199.00
Chesapeake Bay	#	MSD/634P+	199.00
North Carolina	#	MSD/645P+	199.00
S Carolina-N Florida	#	MSD/642P+	199.00
N Bahamas	#	MSD/699P+	199.00
Central & S Florida	#	MSD/632P+	199.00
East Gulf of Mexico	#	MSD/630P+	199.00
Central Gulf of Mexico	#	MSD/651P+	199.00
West Gulf of Mexico	#	MSD/635P+	199.00
California South-Baja & Hawaii	#	MSD/644P+	199.00
California & Oregon	#	MSD/643P+	199.00
Puget Sound	#	MSD/638P+	199.00
Lake Superior	#	MSD/647P+	249.00
Lake Michigan	#	MSD/646P+	199.00
Lake Huron	#	MSD/652P+	249.00
Lake Erie & Saint Clair	#	MSD/649P+	249.00
Lake Ontario	#	MSD/648P+	249.00

### XL3

DESCRIPTION	ITEM	NAV#	MSRP
<b>Lower 48 States &amp; Hawaii</b>			
West Great Lakes	#	MSD/900P+	299.00
East Great Lakes	#	MSD/901P+	299.00
US Northeast & Canyons	#	MSD/904P+	299.00
US Mid Atlantic & Canyons	#	MSD/905P+	299.00
US Southeast-Bahamas	#	MSD/906P+	299.00
Gulf of Mexico	#	MSD/907P+	299.00
US West Coast	#	MSD/912P+	299.00
<b>Canada &amp; Alaska</b>			
Nova Scotia-St Lawrence River*	#	MSD/902P-2	249.00
Nova Scotia-Newfoundland*	#	MSD/903P-2	249.00
Vancouver Island	#	MSD/913P+	249.00
North BC-Baranof Island*	#	MSD/914P-2	249.00
South Alaska*	#	MSD/915P-2	199.00
NW Alaska-Aleutians*	#	MSD/916P-2	199.00
<b>South &amp; Central America</b>			
Caribbean & Bermuda*	#	MSD/908P-2	249.00
South America East*	#	MSD/909P-2	249.00
South America West*	#	MSD/910P+	249.00
Mexico / Central America*	#	MSD/911P-2	249.00

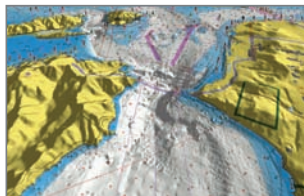
\*Limited Platinum+ features.



**Platinum+ Satellite Photo Overlay**  
Reveals more detail to improve situational awareness.



**Gold 2D Marine Charts** The clearest electronic charts for navigation.



**Platinum+ 3D with TurboView™**  
View depths and elevation with 360° rotation and adjustable pitch.



**Fish'N Chip** Ideal for locating fish holding structure with high resolution detail.

## Gold

**Gold All-In-One 2D Charts** — The navigation standard. Huge coverage areas, nav aids, tides, currents, water depth, wrecks, rocks, marinas, and port services.

DESCRIPTION	ITEM	NAV#	MSRP
All USA & N Bahamas	#	MSD/1XG	199.00
Canada & SE Alaska	#	MSD/2XG	249.00
Central & South America	#	MSD/3XG	199.00

## Fish'N Chip

**Fish'N Chip HD Fishing Detail** — The most detailed fishing charts for US waters with new data, inshore high resolution bathymetry, vegetation areas, tides, and currents.

DESCRIPTION	ITEM	NAV#	MSRP
East	#	MSD/FISH-E	199.00
Great Lakes	#	MSD/FISH-G	199.00
West & Gulf	#	MSD/FISH-W	199.00